



SAUGATUCK TOWNSHIP FIRE DISTRICT

Proudly serving : Douglas | Saugatuck | Saugatuck Township



3342 Blue Star Highway
Saugatuck, MI 49453
269 857-3000 / Fax: 269 857-1228
E-mail: info@saugatuckfire.org

FIRE DISTRICT BOARD MEETING

4:00pm – January 6th, 2025

WORKSHOP AGENDA

1. Call to Order:
2. Pledge of Allegiance (*Stand if you are able*):
3. Roll Call:
4. Reminder: It is requested the board silences cell phones and put them away for the duration of the meeting.
5. Approval of Agenda (*additions / deletions*):
6. Public Comment on Agenda Items Only: (*The Fire Board requests that speakers respect the three-minute time limit for individual comments and the five-minute time limit for an individual speaking on behalf of a group. This is not a question-and-answer session, it is an opportunity to voice your thoughts with the Fire Board.*)
7. Fire Chief Comments:
 - A. **None**
8. Unfinished Business:
 - A. **Collective Bargaining Agreement with Local 5291 – Update**
 - B. **Schedule of Meetings – 2025 – Review Holiday Conflicts**
9. New Business:
 - A. **Strategic Future Planning**
 1. **Station Needs**
 2. **Property Surveys**
 3. **Staffing Needs**
 1. **Front Office Position from Part-Time to Full-Time, Non-Bargaining Position**
 4. **Apparatus Needs**
 1. **2171 & 2173 Scheduled for Replacement, both Overdue**
10. Correspondence:
 - A. **None**
11. Public Comments: (*The Fire Board requests that speakers respect the three-minute time limit for individual comments and the five-minute time limit for an individual speaking on behalf of a group. This is not a question-and-answer session, it is an opportunity to voice your thoughts with the Fire Board.*)
12. Fire Board Comments:
13. Adjournment:

NOTICE

Requests for accommodation or interpretive services must be made 48 hours prior to this meeting.
Please contact Saugatuck Township Fire District at 269-857-3000 for further information.



SAUGATUCK TOWNSHIP FIRE DISTRICT

Proudly serving : Douglas | Saugatuck | Saugatuck Township

Item #8B



3342 Blue Star Highway
Saugatuck, MI 49453
Phone: 269 857-3000
E-mail: info@saugatuckfire.org

SAUGATUCK TOWNSHIP FIRE DISTRICT FIRE DISTRICT ADMINISTRATIVE BOARD SCHEDULE OF MEETINGS

Meetings are held at
Saugatuck Township Fire District, 3342 Blue Star Highway, Saugatuck, MI 49453
at **4:00 p.m.** on the 1st and 3rd Monday of each Month.

2025 Fire Board Workshop

Meeting Dates

- Monday January 6, 2025 —
- Monday February 3, 2025 —
- Monday March 3, 2025 —
- Monday April 7, 2025 —
- Monday May 5, 2025 —
- Monday June 2, 2025 —
- Monday July 7, 2025 —
- Monday August 4, 2025 —
- **Monday September 1, 2025 — LABOR DAY**
- Monday October 6, 2025 —
- Monday November 3, 2025 —
- Monday December 1, 2025 —

2025 Fire Board Regular

Meeting Dates

- **Monday January 20, 2025 — MLK DAY**
- **Monday February 17, 2025 — PRESIDENTS**
- **Monday March 17, 2025 — ST PATS**
- Monday April 21, 2025 —
- Monday May 19, 2025 —
- Monday June 16, 2025 —
- Monday July 15, 2025 —
- Monday August 21, 2025 —
- Monday September 15, 2025 —
- Monday October 20, 2025 —
- Monday November 17, 2025 —
- Monday December 15, 2025 —

NOTICE

Request for accommodations or interpretive services must be made 48 hours prior to this meeting.
Please contact Saugatuck Township Fire District at 269-857-3000 for further information.

Safe Harbor
Tower
Marine
(SHTM) Boat
Storage

Safe Harbor
Tower
Marine
(SHTM) Boat
Storage

STFD
Owned
Parcel "D"

Main
Station

Safe Harbor
Tower
Marine
(SHTM) Boat
Storage

Back Barn

STFD
Owned
Original

STFD
Owned
Parcel "C"

Live Fire Training
Facility

STFD
Owned
Parcel "A"

Safe Harbor
Tower
Marine
(SHTM) Boat
Storage

STFD
Owned
Parcel "B"

Saugatuck Township Fire District
3342 Blue Star Hwy.
Saugatuck, MI 49453

STFD Owned Parcel Map for
1/6/2024 Fire Board Meeting

Safe Harbor
Tower
Marine
(SHTM) Boat
Storage

Safe Harbor
Tower
Marine
(SHTM) Boat
Storage

STFD
Owned
Parcel "D"

Main
Station

Safe Harbor
Tower
Marine
(SHTM) Boat
Storage

Back Barn
STFD
Owned
Original

Parcel "B" &
"C" were
combined.
Easement
Relocated to
South Line

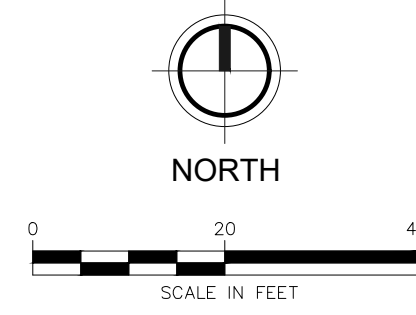
Live Fire Training
Facility
STFD
Owned
Parcel "A"

Safe Harbor
Tower
Marine
(SHTM) Boat
Storage

EASEMENT for SHTM
20' wide x 128' long +/-

BM #6A EL. 617.83'
MAG SPIKE E FACE PP 1 PARKING LOT W OF FIRE STATION, ±51' SW OF NW BLDG COR, ±72' NE OF NE GARAGE COR
(NAVD88 GEOID 18, VIA VRS OPUS & GPS OBSV)

BM #6B EL. 618.98'
MAG SPIKE IN NE COR LANDSCAPE TIMBER RET WALL N SIDE OF DPW BLDG, ±9' NE OF NE BLDG COR, ±57' E OF 6" CHAIN LINK FENCE
(NAVD88 GEOID 18, VIA VRS OPUS & GPS OBSV)



EXISTING FEATURES LEGEND

SYMBOL	DESCRIPTION	SYMBOL	DESCRIPTION	SYMBOL	DESCRIPTION
	TREE (DECIDUOUS)		CABLE BOX		SURVEY CONTROL POINT
	BUSH		TELEPHONE RISER		BENCHMARK
	TREE (CONIFEROUS)		TELEPHONE MANHOLE		SECTION CORNER
	DEAD TREE		TELEPHONE HANDHOLE		BOUNDARY LINE
	STUMP		ELECTRICAL RISER		PROPERTY LINE
	MANHOLE		ELECTRICAL MANHOLE		WATERMAIN
	SANITARY CLEANOUT		ELECTRICAL HANDHOLE		SANITARY SEWER
	RD. CATCH BASIN		POWER POLE		STORM SEWER
	SQ. CATCH BASIN		LIGHT POLE		CULVERT (21" AND UNDER)
	FIRE HYDRANT		GUY POLE		CULVERT (24" AND UP)
	WATER VALVE		GUY ANCHOR		CABLE TV
	CURB STOP & BOX		PED CROSSING SIGNAL		TELEPHONE
	WELL		YARD LIGHT		ELECTRIC
	WATER MANHOLE		SIGN		GAS
	WATER METER		MAILBOX		OVERHEAD LINES
	SOIL BORING		POST		GUARDRAIL
	MONITORING WELL		FOUND CONC. MONUMENT		FENCE
			FOUND IRON ROD		WOODLINE
			SET IRON ROD		BUSH/HEDGE ROW

NOTE: ALL ITEMS LISTED ON THE LEGEND MAY NOT BE PRESENT ON DRAWING.



Know what's below.
Call before you dig.



2960 Lucerne Drive SE
Grand Rapids, MI 49546
P: 616.977.1000
F: 616.977.1005

REVISION:

SAUGATUCK TWP FIRE DEPT
SECTION 10, TOWN 3 NORTH, RANGE 16 WEST
SAUGATUCK TOWNSHIP, ALLEGAN COUNTY, MICHIGAN
TOPOGRAPHIC SURVEY

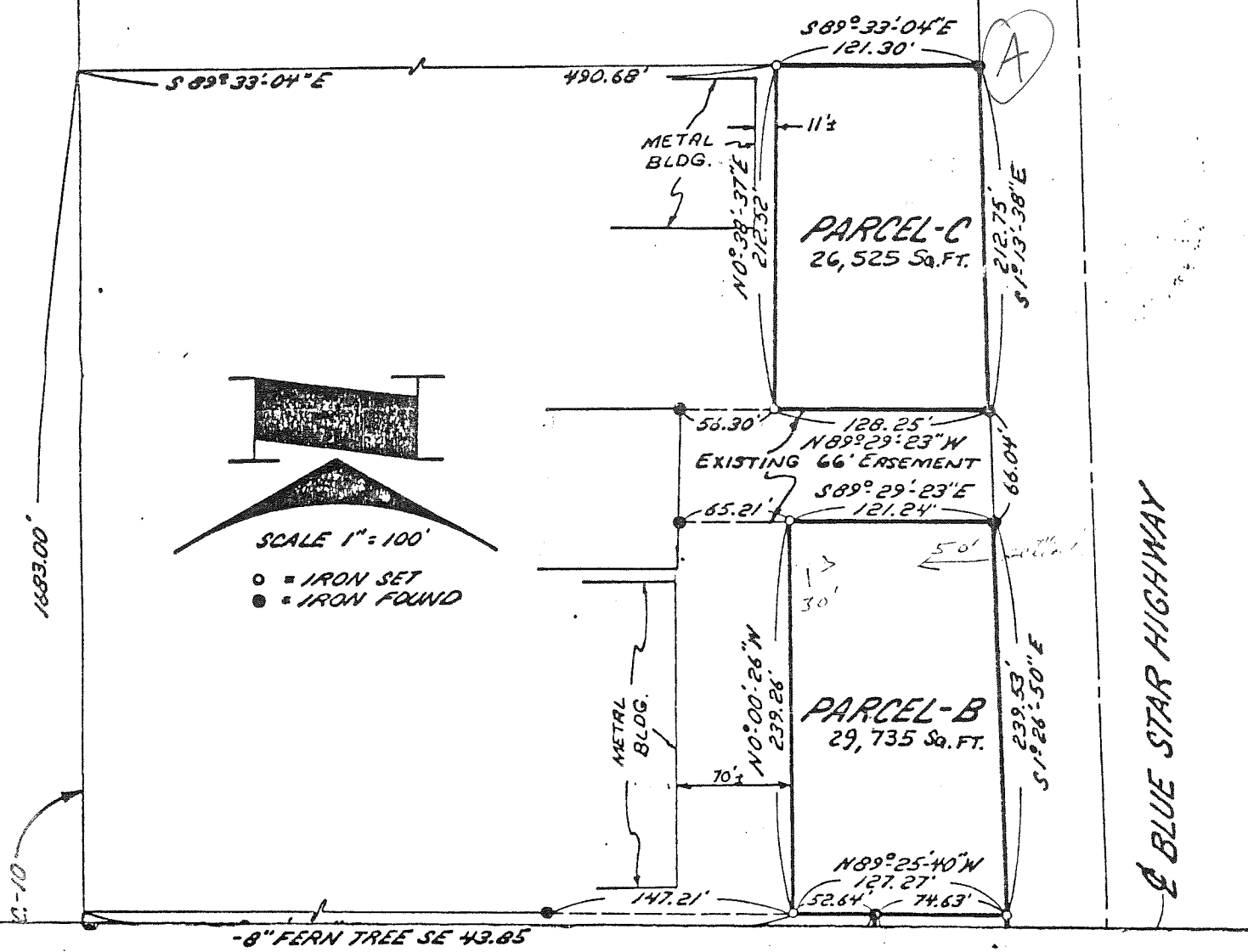
DESIGN TEAM:
JR, SAJ, MRG
CHECK BY:

DRAWING INFORMATION:
838970_2020_Topo
MRG

DRAFT

SEPTEMBER 2020
FAV PROJECT NO:
838970

NW CORNER, SEC. 10, T. 3 N., R. 16 W.
 1" REBAR
 - POWER POLE S 40° W 27.78'
 - E S. END 48" C.M.P. S 65° W 49.30'
 - E N. END 48" C.M.P. N 50° W 35.79'



Client SAUGATUCK YACHT SERVICE
 Date 11-10-83 Job No. 83-285

Being in NW 1/4
 Sec. 10 T. 3 N., R. 16 W.
SAUGATUCK Twp.
ALLEGAN Co. Mich.



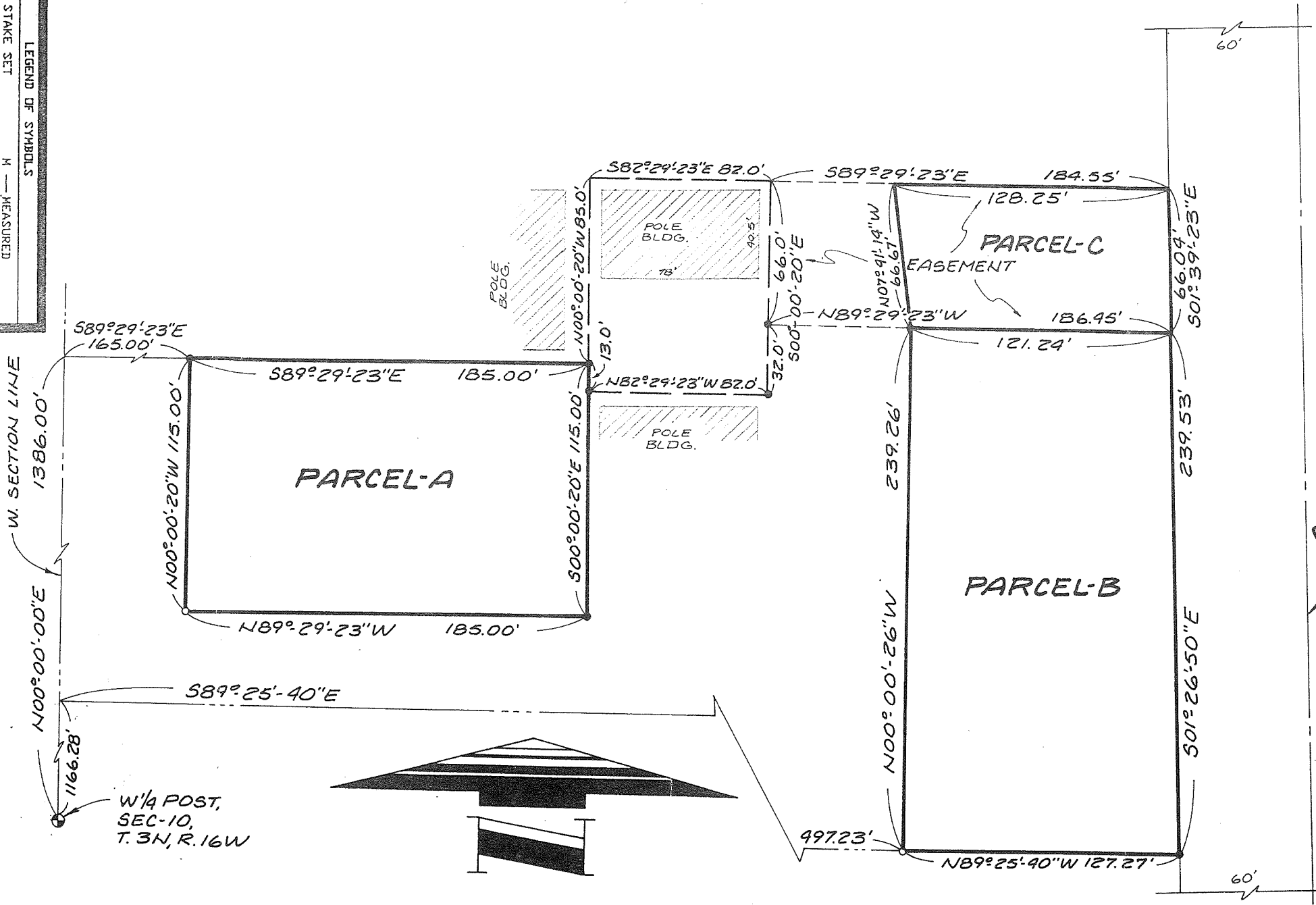
The ratio of closure is within the accuracy of survey as required in Act No. 288 of Public Acts of 1967. This survey complies with the requirements of Section-3 Public Act 132 of 1970.

Act 288 of Michigan Public Acts of 1967 should be checked to see that any property conveyance does not violate this act.

TRI-COUNTY LAND SURVEYS, P. C.
 LAND SURVEYING & CONSULTING ENGINEERING
 319 HUBBARD STREET
 ALLEGAN, MICHIGAN 49010

By Raymond E. Moored
 Registered Land Surveyor - Michigan No. 26463

BLUE STAR HIGHWAY



LEGEND OF SYMBOLS

○	IRON STAKE SET	M	MEASURED DIMENSION
●	IRON STAKE FOUND	C	COMPUTED DIMENSION
□	VOOD STAKE SET	℄	CENTERLINE
■	PLAT MOVEMENT FOUND		
—*—*	FENCE LINE		
P	PLATTED DIMENSION		
R	RECORDED DIMENSION		

WIGHTMAN MOORED, INC.
 Land Surveying and Consulting Engineering
 114 CHESTNUT ST. ALLEGAN, MI 49010
 (616) 871-1000

CLIENT **KALAMAZOO FERRY CO.**
 DATE **8-21-91** JOB NO. **91-562**
 NW 1/4, SECTION-10 T. 3N, R. 16W
 SCALE: 1" = 60'
 SHEET NO. 1 OF 1
 REVISED 8-27-91

Furnished Descriptions

PARCEL-A

Commencing 1386-feet North and 165-feet East of the West 1/4 Post of Section-10, Town 3 North, Range 16 West, thence East 185-feet, thence South 115-feet, thence West 185-feet, thence North 115-feet to the point of beginning.

PARCEL-B

Commencing at the West 1/4 Post of Section-10, town 3 North, Range 16 West, thence North on the West line of said section 1166.28-feet, thence South 89deg-25'-40" East 497.23-feet to the place of beginning of this description, thence North 00deg-00'-26" West 239.26-feet, thence South 89deg-29'-23" East 121.24-feet to the West line of Blue Star Highway, thence South 01deg-26'-50" East on the West line of Blue Star Highway 239.53-feet, thence North 89deg-25'-40" West 127.27-feet to the place of beginning.

PARCEL-C

Commencing at the West 1/4 Post of Section-10, town 3 North, Range 16 West, thence North on the West line of said section 1166.28-feet, thence South 89deg-25'-40" East 624.50-feet to the West line of Blue Star Highway, thence North 01deg-26'-50" West along said highway 239.53-feet to the place of beginning of this description, thence North 89deg-29'-23" West 121.24-feet, thence North 07deg-41'-14" West 66.67-feet, thence South 89deg-29'-23" East 128.25-feet to the West line of Blue Star Highway, thence South 01deg-39'-23" East along said highway 66.04-feet to the point of beginning.

LEGEND OF SYMBOLS

- O — IRON STAKE SET
- — IRON STAKE FOUND
- — WOOD STAKE SET
- — WOOD STAKE FOUND
- PLAT MONUMENT FOUND
- FENCE LINE
- P — PLATTED DIMENSION
- R — RECORDED DIMENSION
- M — MEASURED DIMENSION
- C — COMPUTED DIMENSION
- ⊕ — CENTERLINE

SCALE: 1"=

SHEET NO. 2 OF 2

WIGHTMAN MOORED, INC.



Land Surveying and Consulting Engineers
114 CHESTNUT ST. ALLEGAN, MI 49010
(616)-673-8465

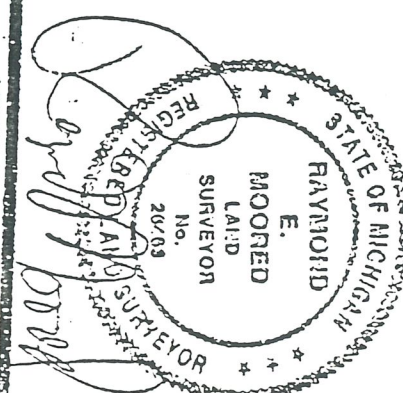
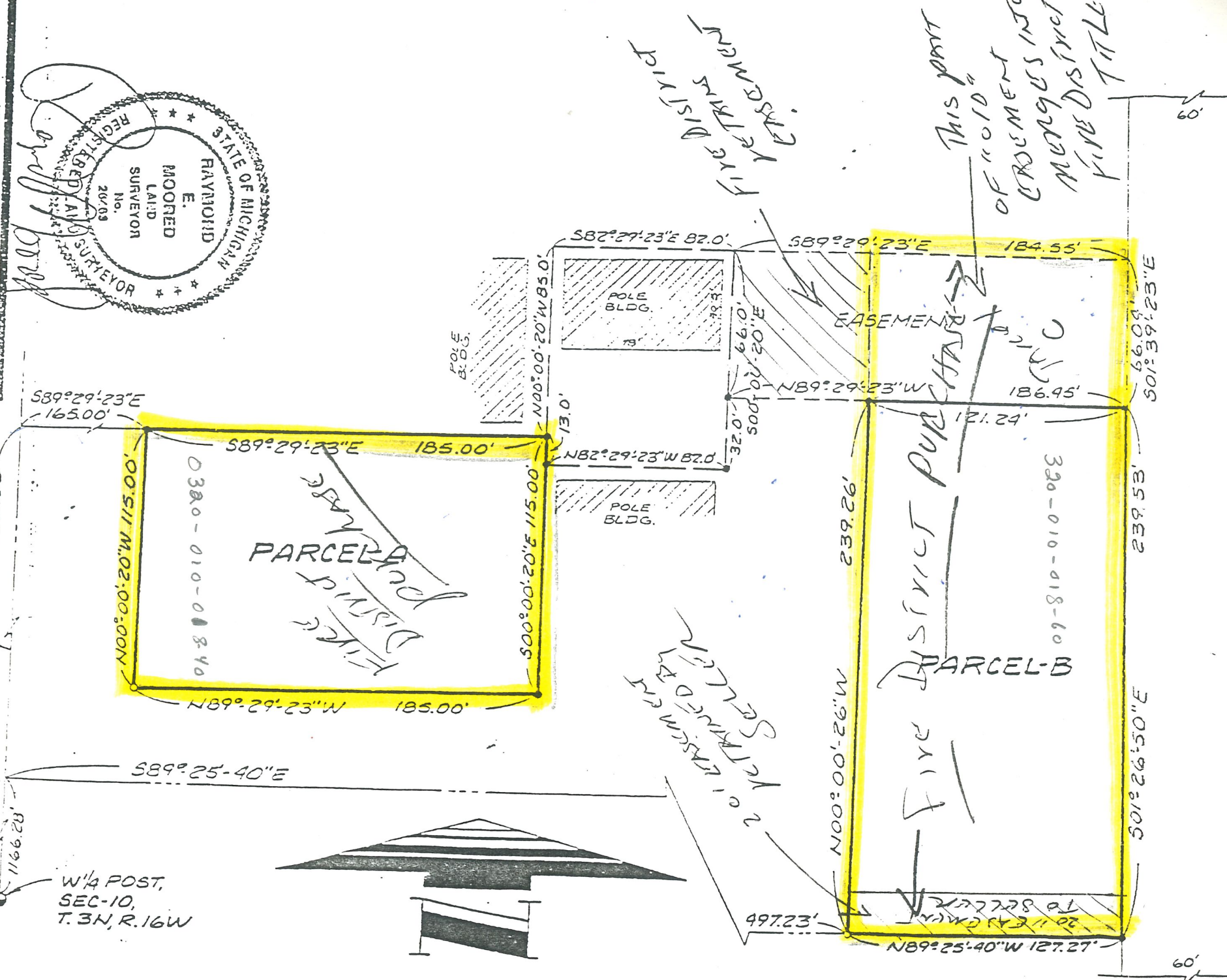
CLIENT Kalamazoo Ferry Co.

DATE 8/21/91 JOB NO. 91-562

NW 1/4, SECTION-10 T.3N, R.16W

Saugatuck TWP, Allegan CD, MI.

BLUE STAR HIGHWAY

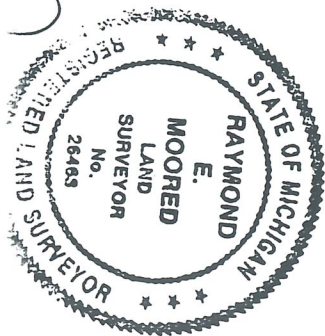


LEGEND OF SYMBOLS

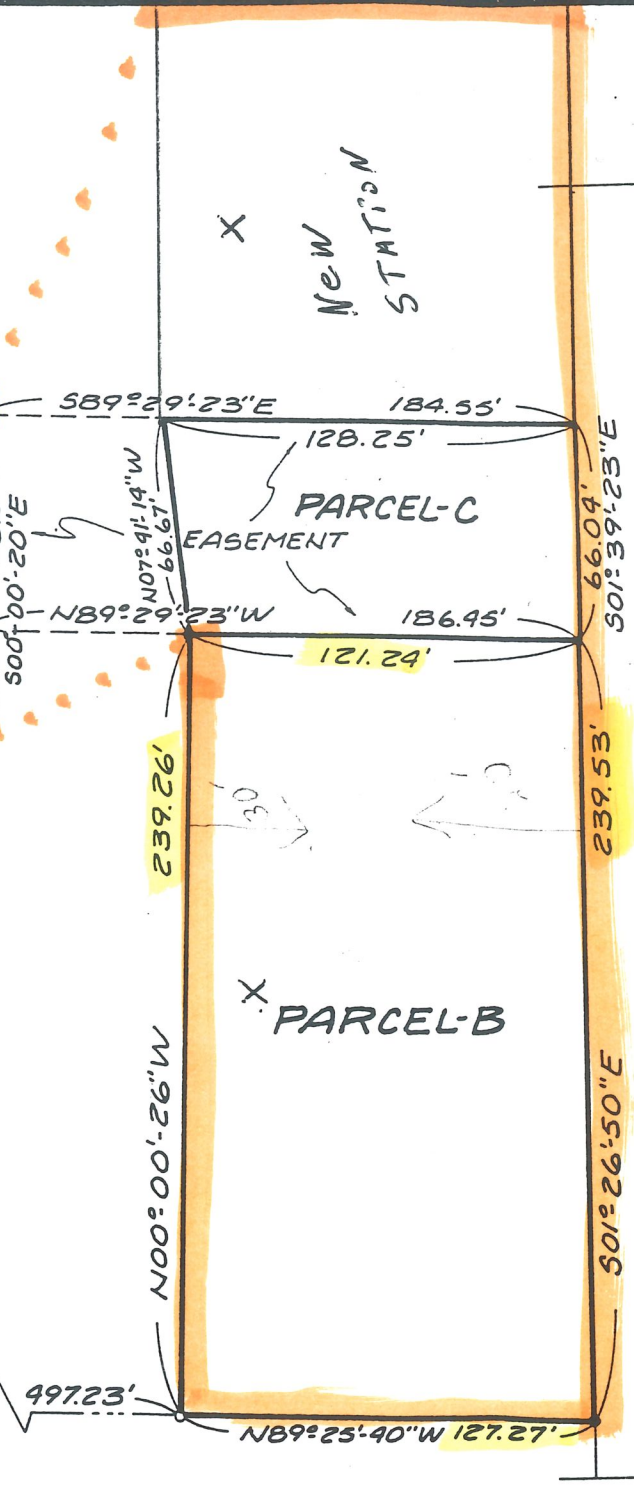
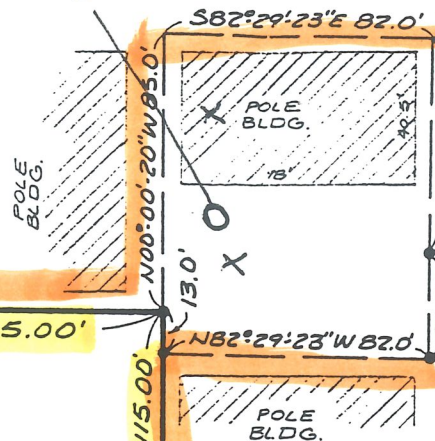
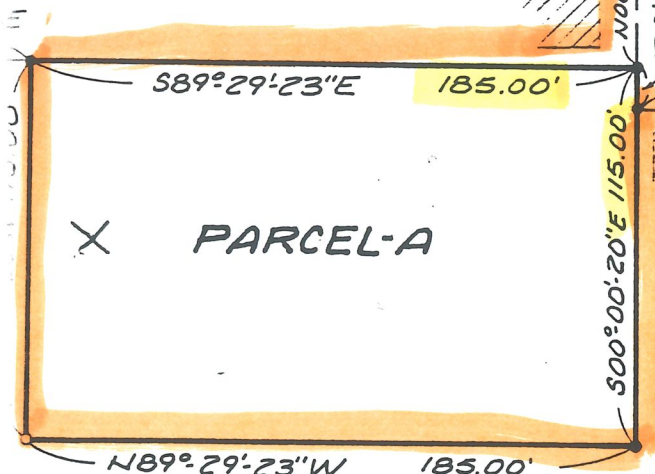
○	IRON STAKE SET	H	MEASURED DIMENSION
□	IRON STAKE FOUND	C	COMPUTED DIMENSION
⊕	WOOD STAKE SET	⊕	CENTERLINE
⊕	PLAT MONUMENT FOUND		
⊕	FENCE LINE		
P	PLATED DIMENSION		
R	RECORDED DIMENSION		

WIGHTMAN MOORHEAD, INC.
 Land Surveying and Consulting Engineering
 114 CHESTNUT ST. ALLEN, MI 49010
 (616) 673-1146

CLIENT: KALAMAZOO FERRY CO.
 DATE: 8-21-91
 JOB NO.: 91-562
 SCALE: 1" = 60'
 SHEET NO. 7 OF 7



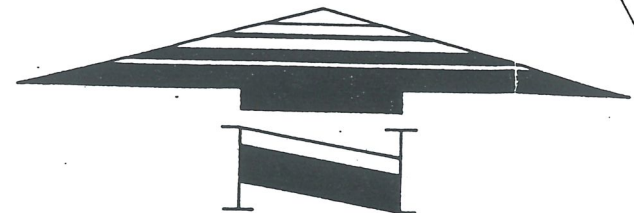
PRO TO LAND



New STATION

BLUE STAR HIGHWAY

$589^{\circ}25'40''E$



POST,
O,
R.16W

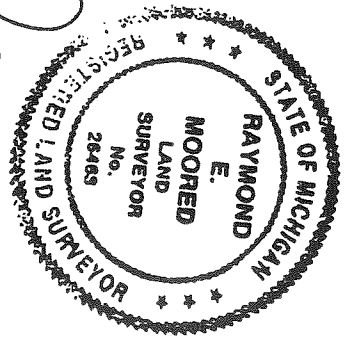
Item #9A2

DOOR BARN

DRIVEWAY
PETERSON

NEW
STATION

Raymond E. Moored



LEGEND OF SYMBOLS

- — IRON STAKE SET
- — WOOD STAKE SET
- ⊠ — PLAT MONUMENT FOUND
- — — — — FENCE LINE
- P — PLATED DIMENSION
- R — RECORDED DIMENSION
- H — MEASURED DIMENSION
- C — COMPUTED DIMENSION
- — — — — CENTERLINE

SCALE, 1" = 60'

SHEET NO. 1 OF 1

REVISED 8-27-91

W. SECTION 10, T.3N, R.16W

3,000.00'±

1,386.00'

116.28'

165.00'

115.00'

S89°25'40"E

S89°29'23"E

N89°29'23"W

185.00'

185.00'

115.00'

130.0'

N82°22'28"W

S82°24'23"E

N89°29'23"W

82.0'

32.0'

500.00'

66.0'

3.02'

0.99'

20.20'

20.20'

0.99'

66.0'

3.02'

20.20'

20.20'

0.99'

66.0'

3.02'

20.20'

20.20'

0.99'

66.0'

3.02'

20.20'

20.20'

0.99'

66.0'

3.02'

20.20'

20.20'

0.99'

66.0'

3.02'

20.20'

20.20'

0.99'

66.0'

3.02'

20.20'

20.20'

0.99'

66.0'

3.02'

20.20'

20.20'

0.99'

66.0'

3.02'

20.20'

20.20'

0.99'

66.0'

3.02'

20.20'

20.20'

0.99'

66.0'

3.02'

20.20'

20.20'

0.99'

66.0'

3.02'

20.20'

20.20'

0.99'

66.0'

3.02'

20.20'

20.20'

0.99'

66.0'

3.02'

20.20'

20.20'

0.99'

66.0'

3.02'

20.20'

20.20'

0.99'

66.0'

3.02'

20.20'

20.20'

0.99'

66.0'

3.02'

20.20'

20.20'

0.99'

66.0'

3.02'

20.20'

20.20'

0.99'

66.0'

3.02'

20.20'

20.20'

0.99'

66.0'

3.02'

20.20'

20.20'

0.99'

66.0'

3.02'

20.20'

20.20'

0.99'

66.0'

3.02'

20.20'

20.20'

0.99'

66.0'

3.02'

20.20'

20.20'

0.99'

66.0'

3.02'

20.20'

20.20'

0.99'

66.0'

3.02'

20.20'

20.20'

0.99'

66.0'

3.02'

20.20'

20.20'

0.99'

66.0'

3.02'

20.20'

20.20'

0.99'

66.0'

3.02'

20.20'

20.20'

0.99'

66.0'

3.02'

20.20'

20.20'

0.99'

66.0'

3.02'

20.20'

20.20'

0.99'

66.0'

3.02'

20.20'

20.20'

0.99'

66.0'

3.02'

20.20'

20.20'

0.99'

66.0'

3.02'

20.20'

20.20'

0.99'

66.0'

3.02'

20.20'

20.20'

0.99'

66.0'

3.02'

20.20'

20.20'

0.99'

66.0'

3.02'

20.20'

20.20'

0.99'

66.0'

3.02'

20.20'

20.20'

0.99'

66.0'

3.02'

20.20'

20.20'

0.99'

66.0'

3.02'

20.20'

20.20'

0.99'

66.0'

3.02'

20.20'

20.20'

0.99'

66.0'

3.02'

20.20'

20.20'

0.99'

66.0'

3.02'

20.20'

20.20'

0.99'

66.0'

3.02'

20.20'

20.20'

0.99'

66.0'

3.02'

20.20'

20.20'

0.99'

66.0'

3.02'

20.20'

20.20'

0.99'

66.0'

3.02'

20.20'

20.20'

0.99'

66.0'

3.02'

20.20'

20.20'

0.99'

66.0'

3.02'

20.20'

20.20'

0.99'

66.0'

3.02'

20.20'

20.20'

0.99'

66.0'

3.02'

20.20'

20.20'

0.99'

66.0'

3.02'

20.20'

20.20'

0.99'

66.0'

3.02'

20.20'

20.20'

0.99'

66.0'

3.02'

20.20'

20.20'

0.99'

66.0'

3.02'

20.20'

20.20'

0.99'

66.0'

3.02'

20.20'

20.20'

0.99'

66.0'

3.02'

20.20'

20.20'

0.99'

66.0'

3.02'

20.20'

20.20'

0.99'

66.0